

WARMUP TECTORA JOISTED BATTEN FLOOR SYSTEM. Timber subfloor. Generic template

REV	DATE	DESCRIPTION	DR	CH



Warmup

The world's **best-selling** floor heating brand™

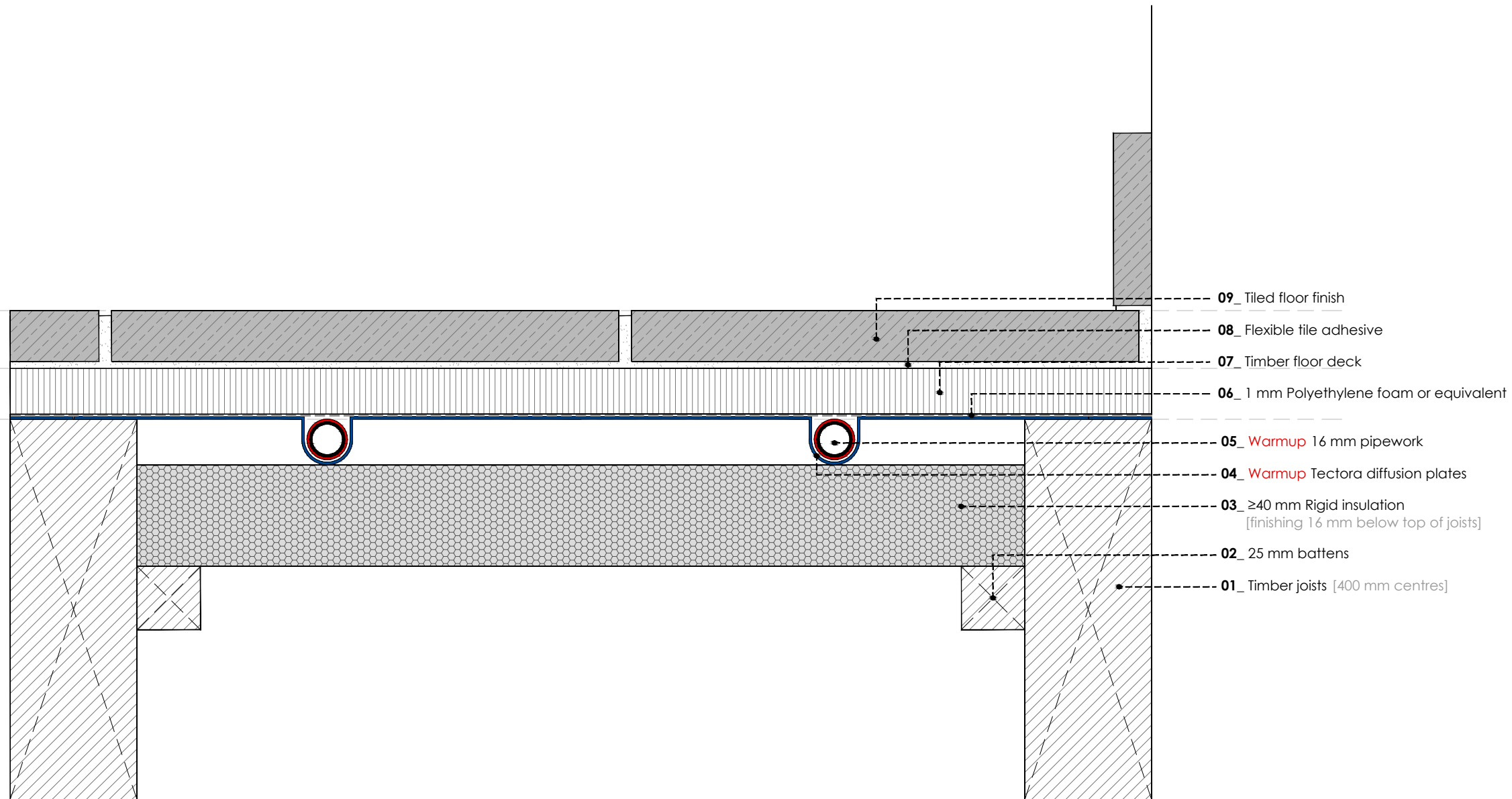
WARMUP PLC, 704 Tudor Estate, Abbey Road, London, NW10 7UW
 Tel 0845 034 8270 Fax 0208 453 6869
cad@warmup.com projects@warmup.com www.warmup.co.uk

DRAWING ISSUE STATUS		DRAWING NO
CONSTRUCTION		09
PROJECT		
TECTORA JOISTED BATTEN FLOOR SYSTEM		
TIMBER SUBFLOOR		
TITLE		
GENERIC TEMPLATE		
DETAILED SECTION		
PROJECT MANAGER	DRAWN	CHECKED
	AA	AW
DATE	SCALE	REVISION
29.12.2016	1:50@A3	
CAD FILE		
20161228-H-TECTORA-DET SECTIONS.DWG		

© This drawing is confidential and may not be used, copied or disclosed to anyone without permission of Warmup Plc. The Copyright of these drawings remain the property of Warmup Plc.

Do not scale from drawings, all dimensions to be checked on site.

The Warmup word and associated logos are trade marks. © Warmup Plc. 2010 - Regd. TM Nos. 1257757, 4409926, 5265707. E & OE. Registered in England No. 2955213.



- 09_ Tiled floor finish
- 08_ Flexible tile adhesive
- 07_ Timber floor deck
- 06_ 1 mm Polyethylene foam or equivalent
- 05_ Warmup 16 mm pipework
- 04_ Warmup Tectora diffusion plates
- 03_ ≥40 mm Rigid insulation
[finishing 16 mm below top of joists]
- 02_ 25 mm battens
- 01_ Timber joists [400 mm centres]

REV	DATE	DESCRIPTION	DR	CH



Warmup

The world's best-selling floor heating brand™

WARMUP PLC, 704 Tudor Estate, Abbey Road, London, NW10 7UW
Tel 0845 034 8270 Fax 0208 453 6869
cad@warmup.com projects@warmup.com www.warmup.co.uk

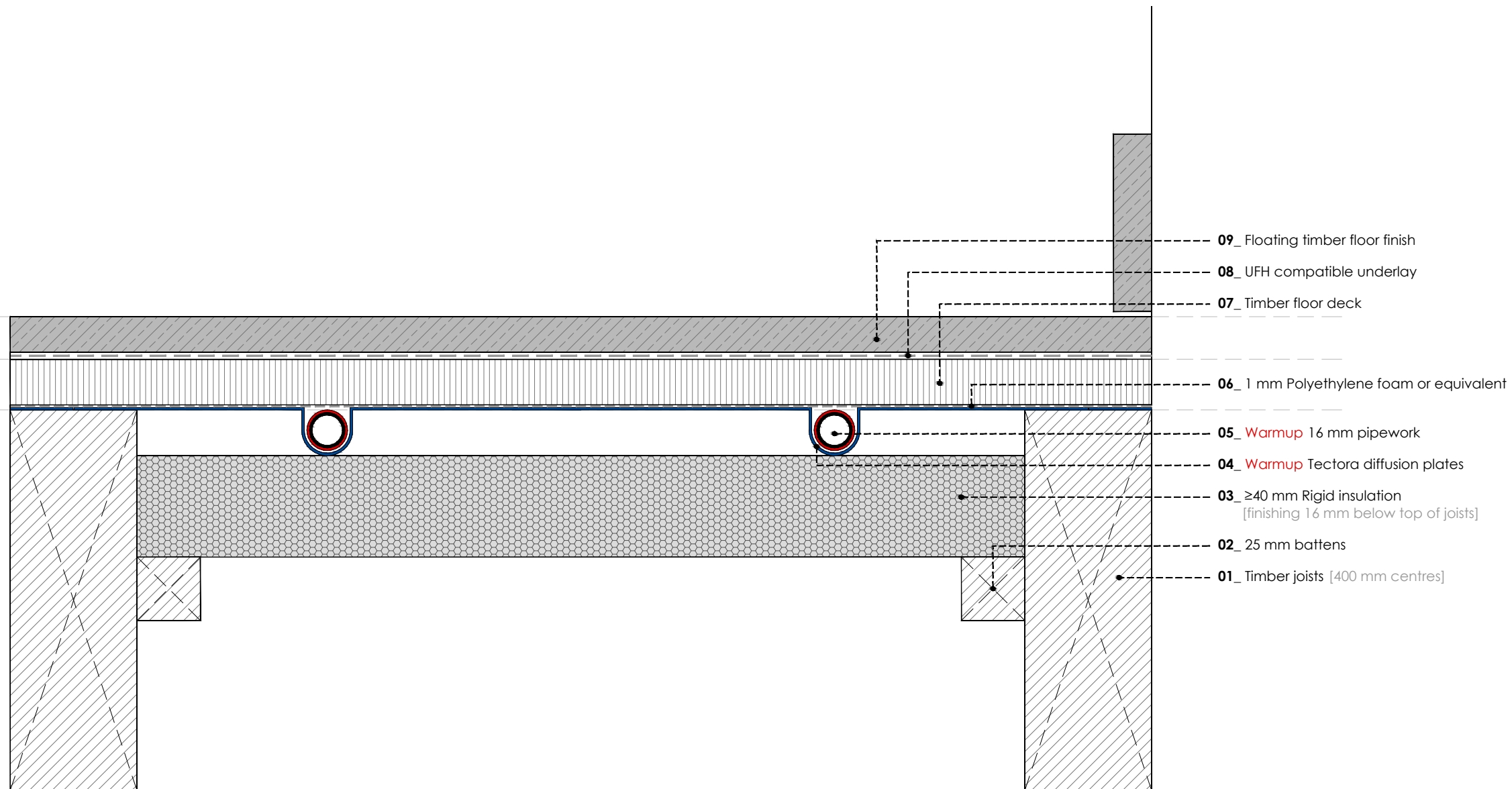
DRAWING ISSUE STATUS		DRAWING NO
CONSTRUCTION		10
PROJECT		
TECTORA JOISTED BATTEN FLOOR SYSTEM		
TIMBER SUBFLOOR		
TITLE		
TILED FLOOR		
DETAILED SECTION		
PROJECT MANAGER	DRAWN	CHECKED
	AA	AW
DATE	SCALE	REVISION
29.12.2016	1:50@A3	
CAD FILE		
20161228-H-TECTORA-DET SECTIONS.DWG		

WARMUP TECTORA JOISTED BATTEN FLOOR SYSTEM. Timber subfloor. Tiled floor

© This drawing is confidential and may not be used, copied or disclosed to anyone without permission of Warmup Plc. The Copyright of these drawings remain the property of Warmup Plc.

Do not scale from drawings, all dimensions to be checked on site.

The Warmup word and associated logos are trade marks. © Warmup Plc. 2010 - Regd. TM Nos. 1257757, 4409926, 5265707. E & OE. Registered in England No. 2955213.



- 09_ Floating timber floor finish
- 08_ UFH compatible underlay
- 07_ Timber floor deck
- 06_ 1 mm Polyethylene foam or equivalent
- 05_ Warmup 16 mm pipework
- 04_ Warmup Tectora diffusion plates
- 03_ ≥40 mm Rigid insulation
[finishing 16 mm below top of joists]
- 02_ 25 mm battens
- 01_ Timber joists [400 mm centres]

REV	DATE	DESCRIPTION	DR	CH



Warmup

The world's best-selling floor heating brand™

WARMUP PLC, 704 Tudor Estate, Abbey Road, London, NW10 7UW
Tel 0845 034 8270 Fax 0208 453 6869
cad@warmup.com projects@warmup.com www.warmup.co.uk

DRAWING ISSUE STATUS		DRAWING NO
CONSTRUCTION		11
PROJECT		
TECTORA JOISTED BATTEN FLOOR SYSTEM		
TIMBER SUBFLOOR		
TITLE		
WOOD / LAMINATE FLOOR - FLOATING		
DETAILED SECTION		
PROJECT MANAGER	DRAWN	CHECKED
	AA	AW
DATE	SCALE	REVISION
29.12.2016	1:50@A3	

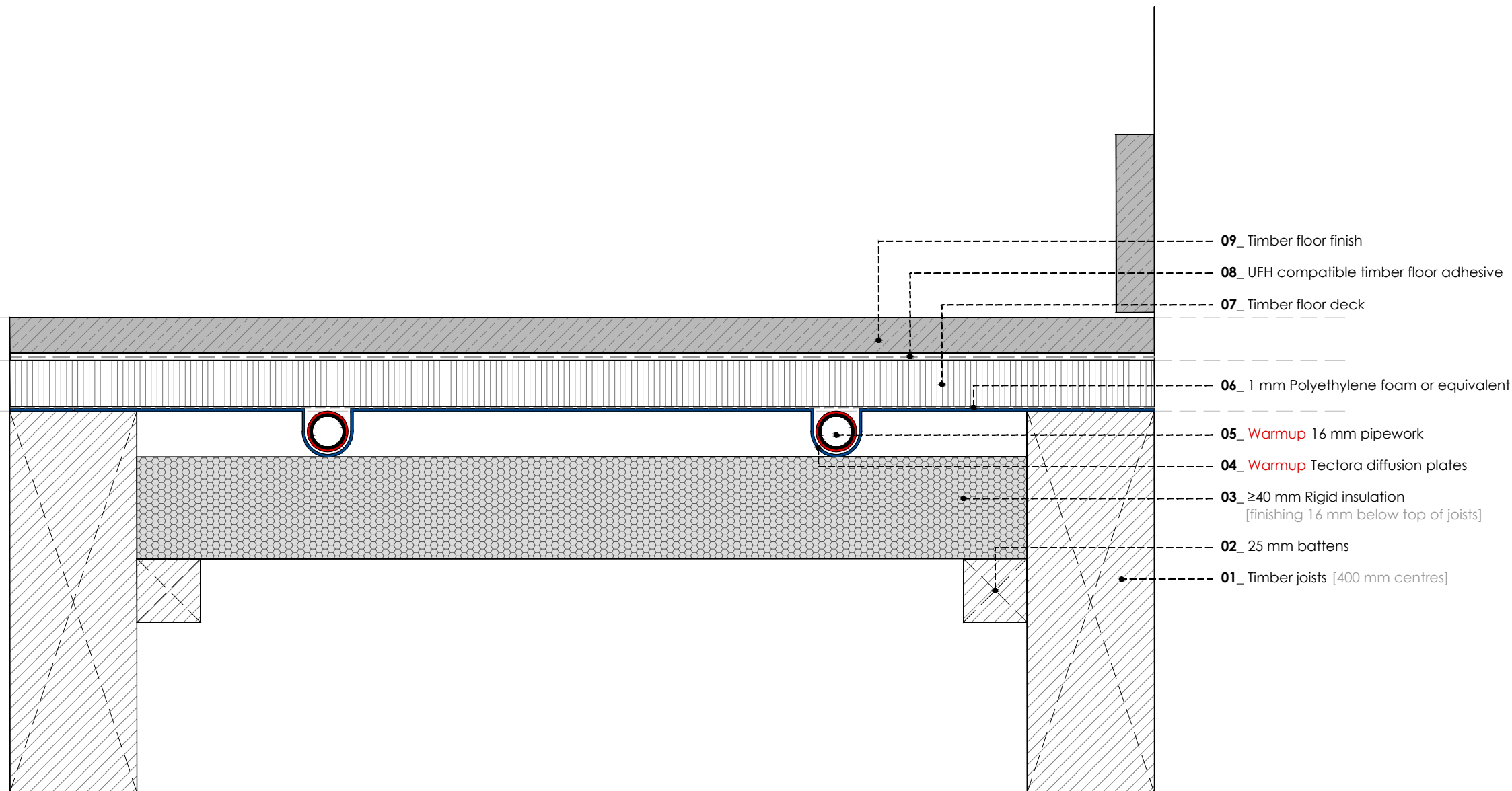
CAD FILE
20161228-H-TECTORA-DET SECTIONS.DWG

© This drawing is confidential and may not be used, copied or disclosed to anyone without permission of Warmup Plc. The Copyright of these drawings remain the property of Warmup Plc.

Do not scale from drawings, all dimensions to be checked on site.

The Warmup word and associated logos are trade marks. © Warmup Plc. 2010 - Regd. TM Nos. 1257757, 4409926, 5265707. E & OE. Registered in England No. 2955213.

WARMUP TECTORA JOISTED BATTEN FLOOR SYSTEM. Timber subfloor. Wood / Laminate Floor - floating



- 09_ Timber floor finish
- 08_ UFH compatible timber floor adhesive
- 07_ Timber floor deck
- 06_ 1 mm Polyethylene foam or equivalent
- 05_ Warmup 16 mm pipework
- 04_ Warmup Tectora diffusion plates
- 03_ ≥40 mm Rigid insulation
[finishing 16 mm below top of joists]
- 02_ 25 mm battens
- 01_ Timber joists [400 mm centres]

REV	DATE	DESCRIPTION	DR	CH



Warmup

The world's best-selling floor heating brand™

WARMUP PLC, 704 Tudor Estate, Abbey Road, London, NW10 7UW
Tel 0845 034 8270 Fax 0208 453 6869
cad@warmup.com projects@warmup.com www.warmup.co.uk

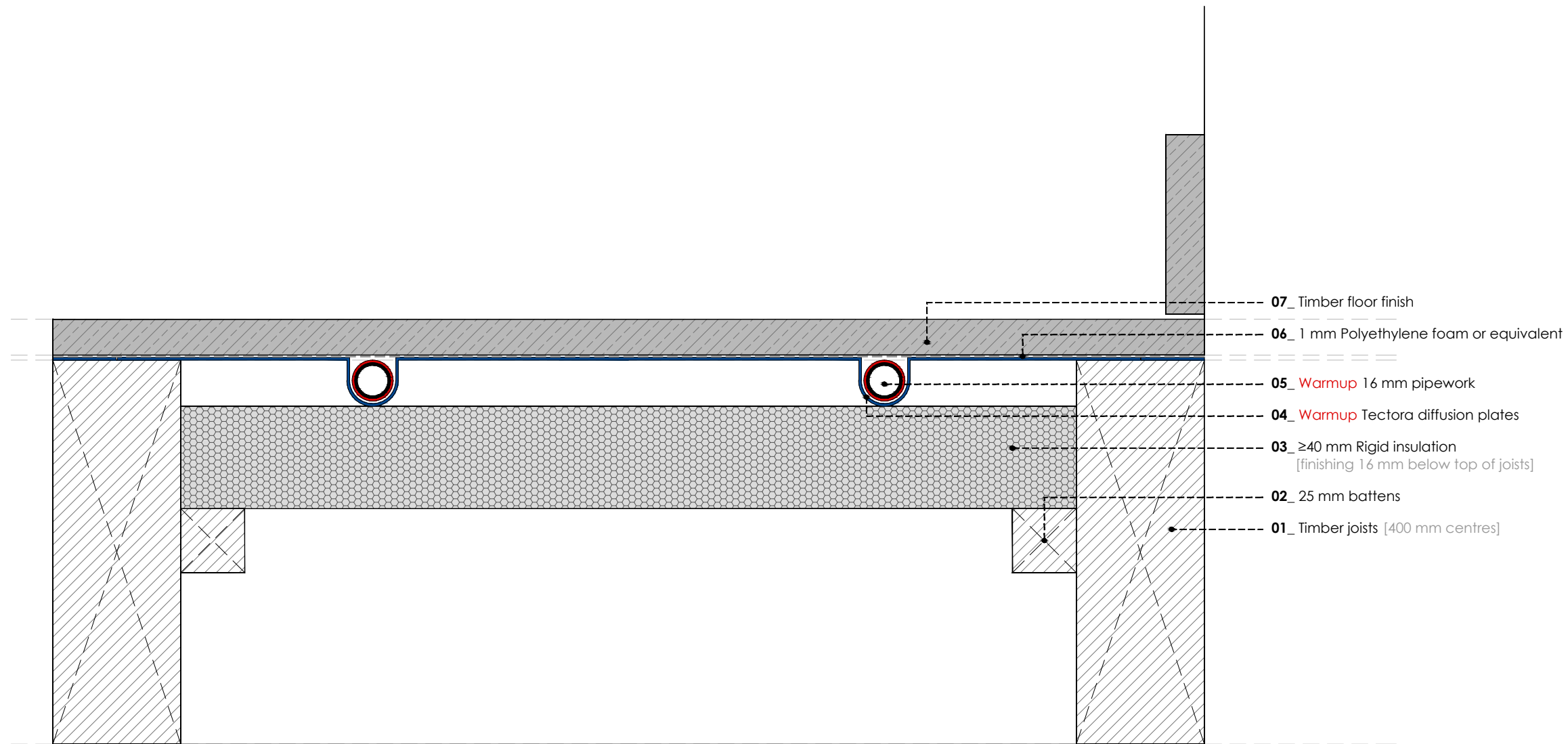
DRAWING ISSUE STATUS		DRAWING NO
CONSTRUCTION		12
PROJECT		
TECTORA JOISTED BATTEN FLOOR SYSTEM		
TIMBER SUBFLOOR		
TITLE		
WOOD / LAMINATE FLOOR - GLUED		
DETAILED SECTION		
PROJECT MANAGER	DRAWN	CHECKED
	AA	AW
DATE	SCALE	REVISION
29.12.2016	1:50@A3	
CAD FILE		
20161228-H-TECTORA-DET SECTIONS.DWG		

WARMUP TECTORA JOISTED BATTEN FLOOR SYSTEM. Timber subfloor. Wood / Laminate Floor - glued

© This drawing is confidential and may not be used, copied or disclosed to anyone without permission of Warmup Plc. The Copyright of these drawings remain the property of Warmup Plc.

Do not scale from drawings, all dimensions to be checked on site.

The Warmup word and associated logos are trade marks. © Warmup Plc. 2010 - Regd. TM Nos. 1257757, 4409926, 5265707. E & OE. Registered in England No. 2955213.



- 07_ Timber floor finish
- 06_ 1 mm Polyethylene foam or equivalent
- 05_ Warmup 16 mm pipework
- 04_ Warmup Tectora diffusion plates
- 03_ ≥ 40 mm Rigid insulation
[finishing 16 mm below top of joists]
- 02_ 25 mm battens
- 01_ Timber joists [400 mm centres]

REV	DATE	DESCRIPTION	DR	CH



Warmup

The world's **best-selling** floor heating brand™

WARMUP PLC, 704 Tudor Estate, Abbey Road, London, NW10 7UW
Tel 0845 034 8270 Fax 0208 453 6869
cad@warmup.com projects@warmup.com www.warmup.co.uk

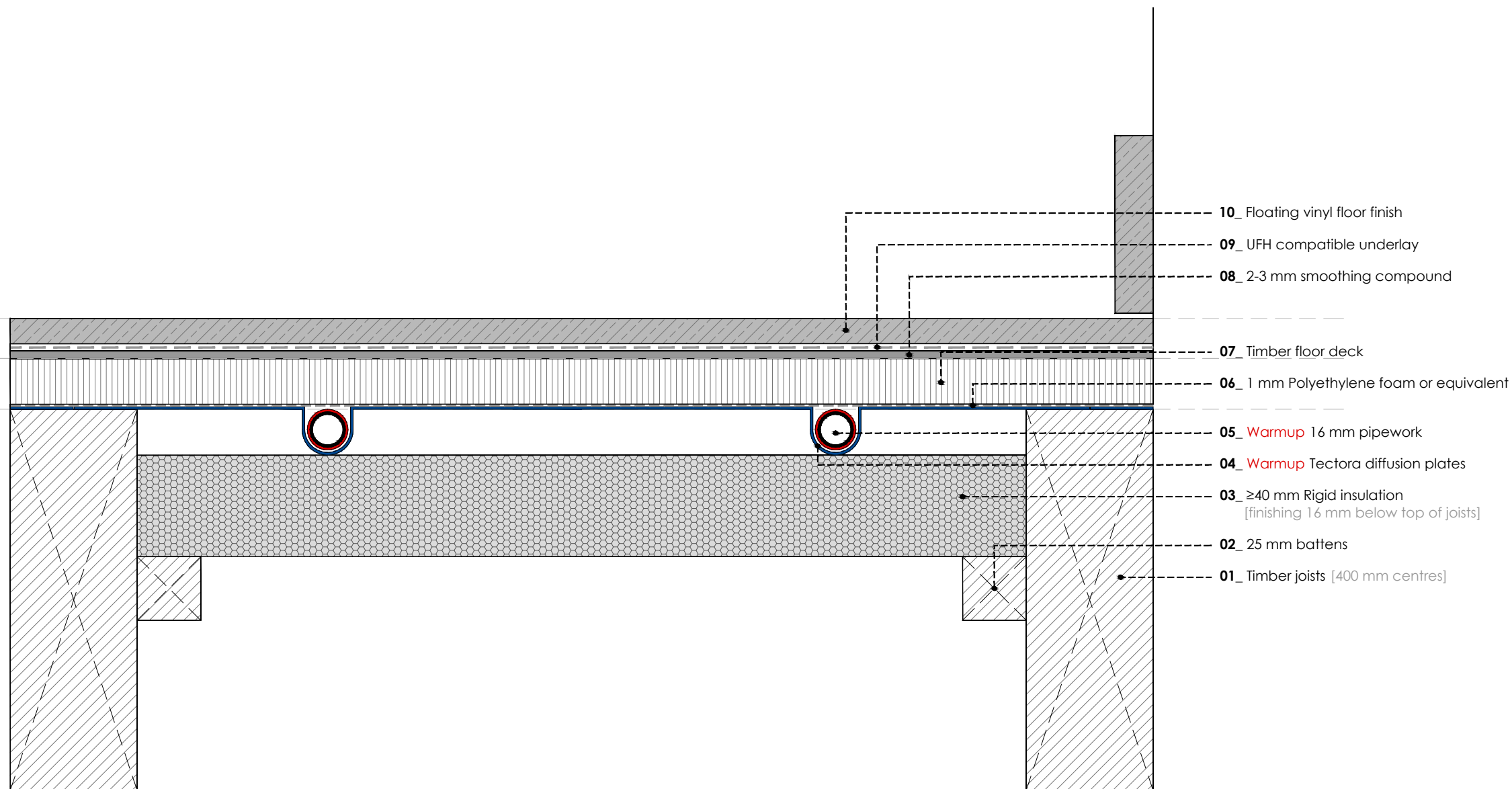
DRAWING ISSUE STATUS		DRAWING NO
CONSTRUCTION		13
PROJECT		
TECTORA JOISTED BATTEN FLOOR SYSTEM		
TIMBER SUBFLOOR		
TITLE		
WOOD/LAMINATE FLOOR-SCREWED/NAILED		
DETAILED SECTION		
PROJECT MANAGER	DRAWN	CHECKED
	AA	AW
DATE	SCALE	REVISION
29.12.2016	1:50@A3	
CAD FILE		
20161228-H-TECTORA-DET SECTIONS.DWG		

WARMUP TECTORA JOISTED BATTEN FLOOR SYSTEM. Timber subfloor. Wood / Laminate Floor - screwed / nailed

© This drawing is confidential and may not be used, copied or disclosed to anyone without permission of Warmup Plc. The Copyright of these drawings remain the property of Warmup Plc.

Do not scale from drawings, all dimensions to be checked on site.

The Warmup word and associated logos are trade marks. © Warmup Plc. 2010 - Regd. TM Nos. 1257757, 4409926, 5265707. E & OE. Registered in England No. 2955213.



REV	DATE	DESCRIPTION	DR	CH



Warmup

The world's best-selling floor heating brand™

WARMUP PLC, 704 Tudor Estate, Abbey Road, London, NW10 7UW
 Tel 0845 034 8270 Fax 0208 453 6869
cad@warmup.com projects@warmup.com www.warmup.co.uk

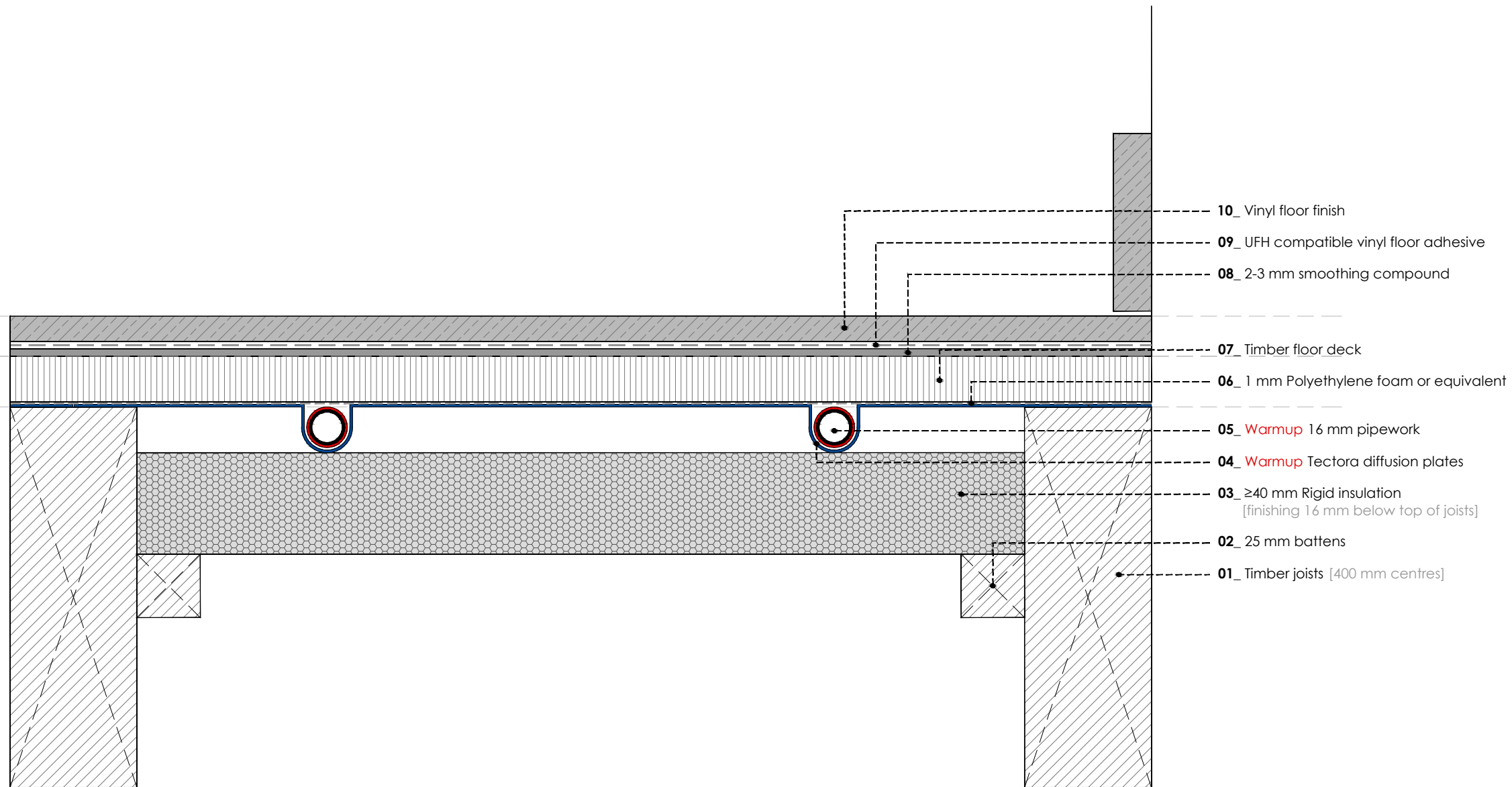
DRAWING ISSUE STATUS		DRAWING NO
CONSTRUCTION		14
PROJECT		
TECTORA JOISTED BATTEN FLOOR SYSTEM		
TIMBER SUBFLOOR		
TITLE		
VINYL FLOOR - FLOATING		
DETAILED SECTION		
PROJECT MANAGER	DRAWN	CHECKED
	AA	AW
DATE	SCALE	REVISION
29.12.2016	1:50@A3	
CAD FILE		
20161228-H-TECTORA-DET SECTIONS.DWG		

WARMUP TECTORA JOISTED BATTEN FLOOR SYSTEM. Timber subfloor. Vinyl Floor - floating

© This drawing is confidential and may not be used, copied or disclosed to anyone without permission of Warmup Plc. The Copyright of these drawings remain the property of Warmup Plc.

Do not scale from drawings, all dimensions to be checked on site.

The Warmup word and associated logos are trade marks. © Warmup Plc. 2010 - Regd. TM Nos. 1257757, 4409926, 5265707. E & OE. Registered in England No. 2955213.



- 10_ Vinyl floor finish
- 09_ UFH compatible vinyl floor adhesive
- 08_ 2-3 mm smoothing compound
- 07_ Timber floor deck
- 06_ 1 mm Polyethylene foam or equivalent
- 05_ Warmup 16 mm pipework
- 04_ Warmup Tectora diffusion plates
- 03_ ≥40 mm Rigid insulation
[finishing 16 mm below top of joists]
- 02_ 25 mm battens
- 01_ Timber joists [400 mm centres]

REV	DATE	DESCRIPTION	DR	CH



Warmup

The world's **best-selling** floor heating brand™

WARMUP PLC, 704 Tudor Estate, Abbey Road, London, NW10 7UW
Tel 0845 034 8270 Fax 0208 453 6869
cad@warmup.com projects@warmup.com www.warmup.co.uk

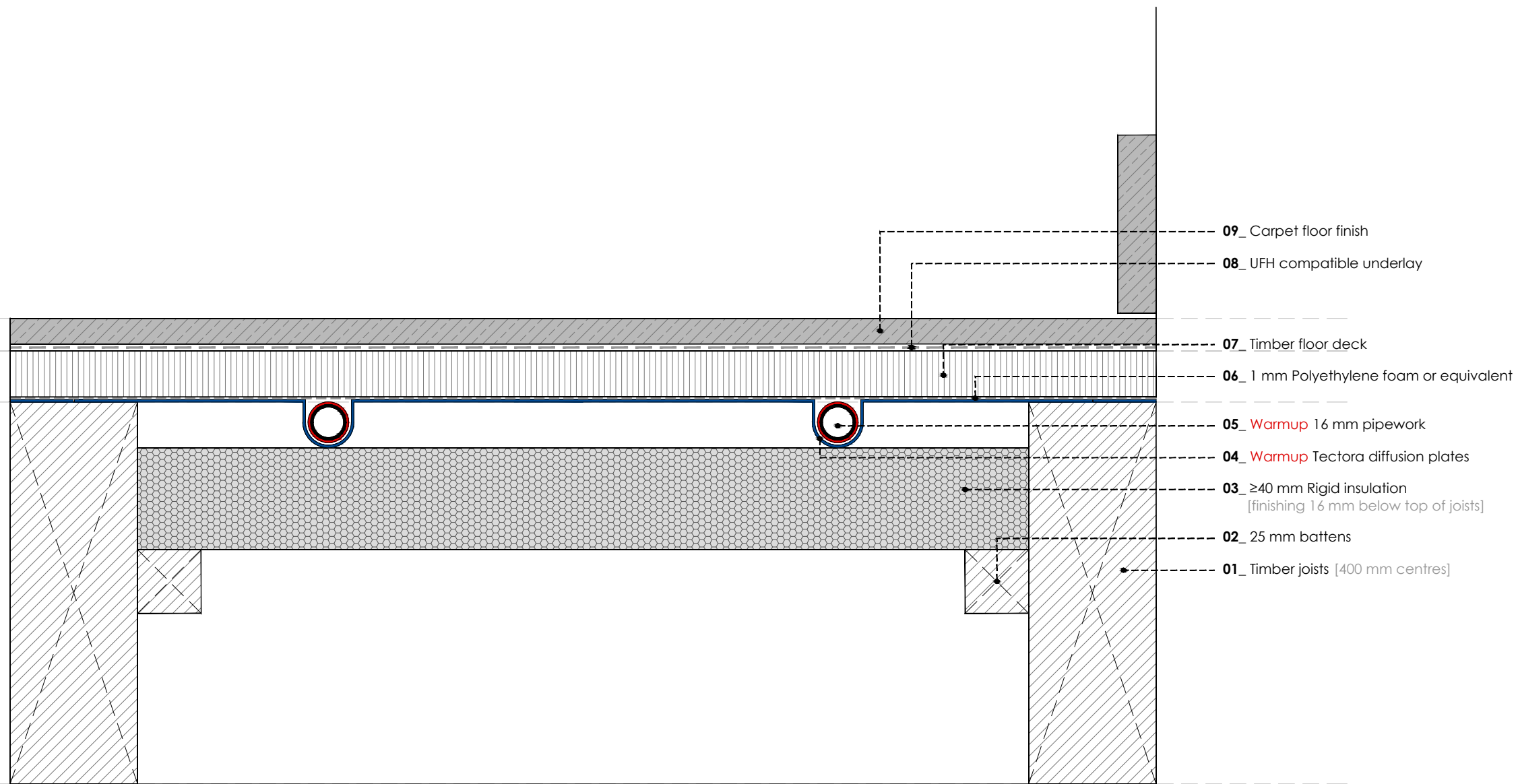
DRAWING ISSUE STATUS		DRAWING NO
CONSTRUCTION		15
PROJECT		
TECTORA JOISTED BATTEN FLOOR SYSTEM		
TIMBER SUBFLOOR		
TITLE		
VINYL FLOOR - GLUED		
DETAILED SECTION		
PROJECT MANAGER	DRAWN	CHECKED
	AA	AW
DATE	SCALE	REVISION
29.12.2016	1:50@A3	
CAD FILE		
20161228-H-TECTORA-DET SECTIONS.DWG		

WARMUP TECTORA JOISTED BATTEN FLOOR SYSTEM. Timber subfloor. Vinyl Floor - glued

© This drawing is confidential and may not be used, copied or disclosed to anyone without permission of Warmup Plc. The Copyright of these drawings remain the property of Warmup Plc.

Do not scale from drawings, all dimensions to be checked on site.

The Warmup word and associated logos are trade marks. © Warmup Plc. 2010 - Regd. TM Nos. 1257757, 4409926, 5265707. E & OE. Registered in England No. 2955213.



- 09_ Carpet floor finish
- 08_ UFH compatible underlay
- 07_ Timber floor deck
- 06_ 1 mm Polyethylene foam or equivalent
- 05_ Warmup 16 mm pipework
- 04_ Warmup Tectora diffusion plates
- 03_ ≥40 mm Rigid insulation
[finishing 16 mm below top of joists]
- 02_ 25 mm battens
- 01_ Timber joists [400 mm centres]

REV	DATE	DESCRIPTION	DR	CH



Warmup

The world's best-selling floor heating brand™

WARMUP PLC, 704 Tudor Estate, Abbey Road, London, NW10 7UW
Tel 0845 034 8270 Fax 0208 453 6869
cad@warmup.com projects@warmup.com www.warmup.co.uk

DRAWING ISSUE STATUS		DRAWING NO
CONSTRUCTION		16
PROJECT		
TECTORA JOISTED BATTEN FLOOR SYSTEM		
TIMBER SUBFLOOR		
TITLE		
CARPET FLOOR		
DETAILED SECTION		
PROJECT MANAGER	DRAWN	CHECKED
	AA	AW
DATE	SCALE	REVISION
29.12.2016	1:50@A3	
CAD FILE		
20161228-H-TECTORA-DET SECTIONS.DWG		

WARMUP TECTORA JOISTED BATTEN FLOOR SYSTEM. Timber subfloor. Carpet Floor

© This drawing is confidential and may not be used, copied or disclosed to anyone without permission of Warmup Plc. The Copyright of these drawings remain the property of Warmup Plc.

Do not scale from drawings, all dimensions to be checked on site.

The Warmup word and associated logos are trade marks. © Warmup Plc. 2010 - Regd. TM Nos. 1257757, 4409926, 5265707. E & OE. Registered in England No. 2955213.